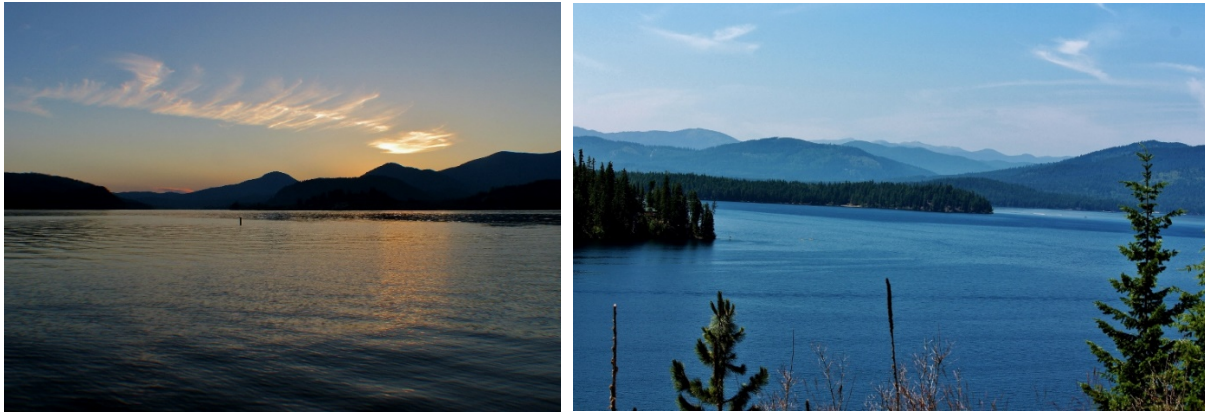


Heading Home – Idaho and Montana

I've chosen a state park in northern Idaho and will have a full day to explore the area. The campground is on Lake Pend Oreille. It's a pretty lake with limited public access. I found Priest Lake to be the same, very limited public access to the lake in the area that I visit. I had looked at a volunteer position listing for this lake and wanted to visit before submitting an application. It is beautiful in this area but very remote and not a location I would enjoy for an extended period of time. Photos include Lake Pend Oreille, Priest Lake.



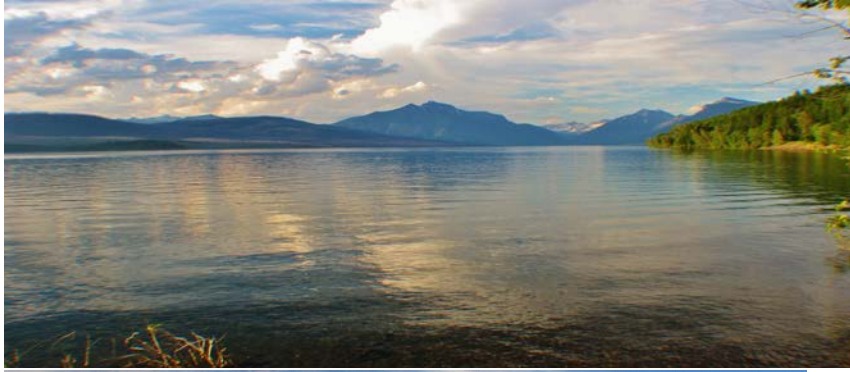
A very short stay in Idaho this trip so I'll have to return to explore the lower portion of the state, but now it's on to Montana and Glacier National Park for a first time visit.

Kootenai Falls near Libby Montana provides a nice break to stretch my legs. This is an impressive area of the Kootenai River and a swinging bridge provides a wonderful view of the white water and falls. A nice stop for a picnic lunch and a walk to stretch the legs.



West Glacier MT is my destination and I'll have a few days to enjoy Glacier National Park. It's early July and the weather is pleasant in the higher altitudes. Snow in the upper elevations though and the Going to the Sun road has recently opened for travel.

Photos include Lake McDonald, views along the road, winter snow, greeter near the visitor center, spectacular water falls.



I will definitely return to Glacier National Park and enjoy all the beauty it has to offer. Early July was a great time of year. It is high time in the visitor season but I didn't find the area overloaded with visitors. My next stop may be a little more congested though – Yellowstone National Park and a return visit to enjoy it as well as the Grand Tetons National Park.

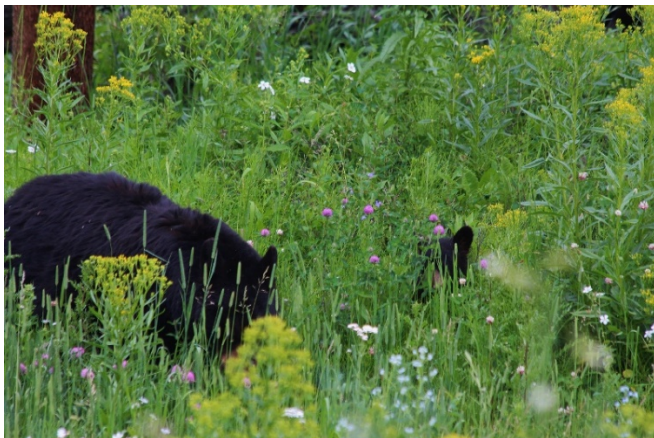
The drive from West Glacier, MT to West Yellowstone, MT is a little over 400 miles and I decide to break the trip into 2 days rather than 1 long day. I stop at Salmon Lake State Park near Missoula. It's a

beautiful ride on Route 83 and I'm glad to have the slow pace to enjoy it. The second day I travel a short while on the interstate and then get on Route 287 to approach the West Yellowstone area. This route takes me by Earthquake Lake Geologic area and I enjoy a nice visit learning about the 1959 earthquake that dramatically changed the Madison Canyon and Hebgen Lake area. I'll continue to enjoy the lake at the campground while I visit in the area. Photos include Headed to the Rockies, Earthquake Lake,



My camp base for Yellowstone is about 10 miles from the west entrance but it's worth the drive. A few days in the Yellowstone area with electric hookup for \$10 a night with America the Beautiful pass. I have 4 days to explore Yellowstone and the Grand Tetons so every day is fairly long but pleasant because of all the stops I make along the way. Rather than go into detail I'll just share some photos including Artists Point, elk, Lower Falls, Norris Geyser Basin, Grand Tetons and Jenny Lake, mama and cub alongside the road, north entrance to park, Mammoth Hot Springs, Yellowstone Lake.







These are just a miniscule amount of areas to enjoy at these parks and they both deserve repeat visits which I plan to do someday. I have a nice lunch sitting by the lake and then head over the mountain to Cody, WY.